

THE “2ND-LIFE” CYCLE

SUSTAINABLE ICT-4-DEVELOPMENT

www.close-the-gap.org | info@close-the-gap.org

www.worldloop.org | info@worldloop.org



SOCIAL CHALLENGES



Food Security



Education



Gender Equality



Health



Environmental Sustainability

↑ access to INFORMATION & COMMUNICATION TECHNOLOGIES
=
SOCIAL BENEFITS





ACCESS TO ICT CAN BE LIMITED BY...

The high costs of quality IT equipment.

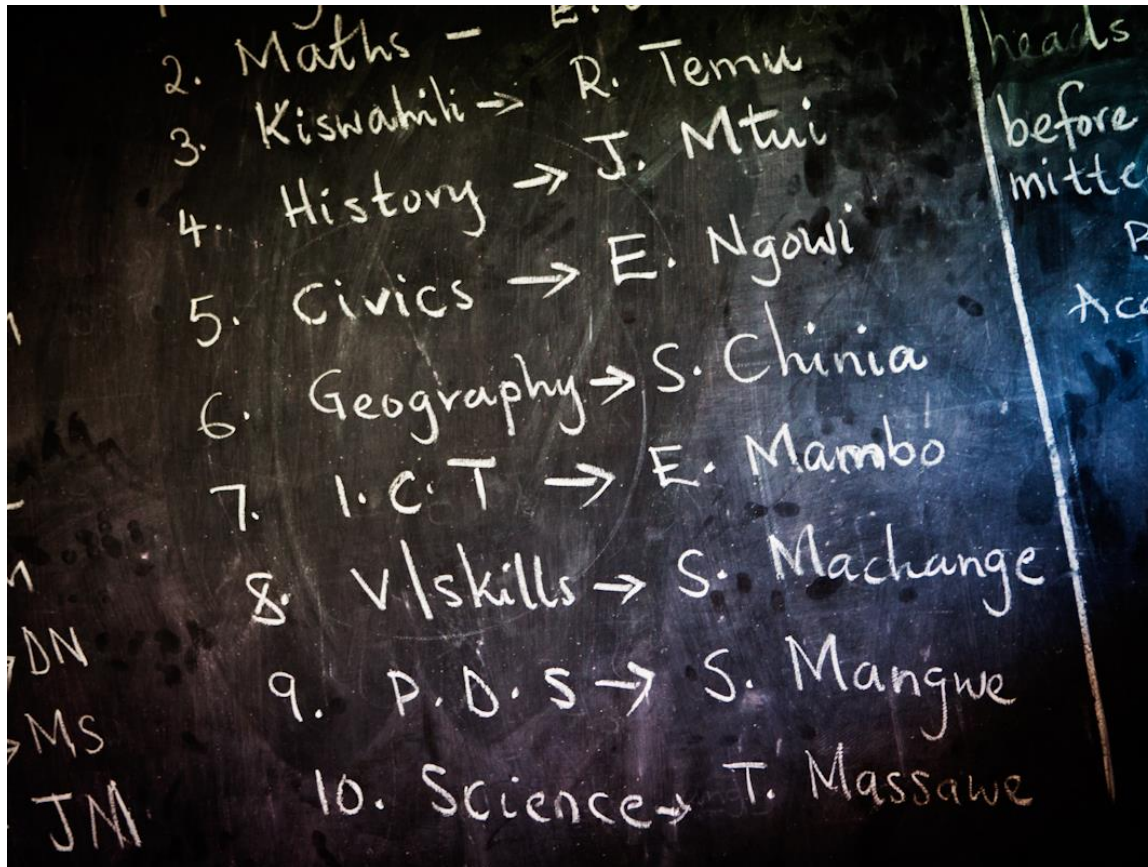




ICT PROJECTS REQUIRE...

Local expertise.





ICT END-USERS NEED ACCESS TO...

Local qualified IT teachers.





ICT PROJECTS ARE UNSUSTAINABLE...

In the absence of safe e-waste disposal options.

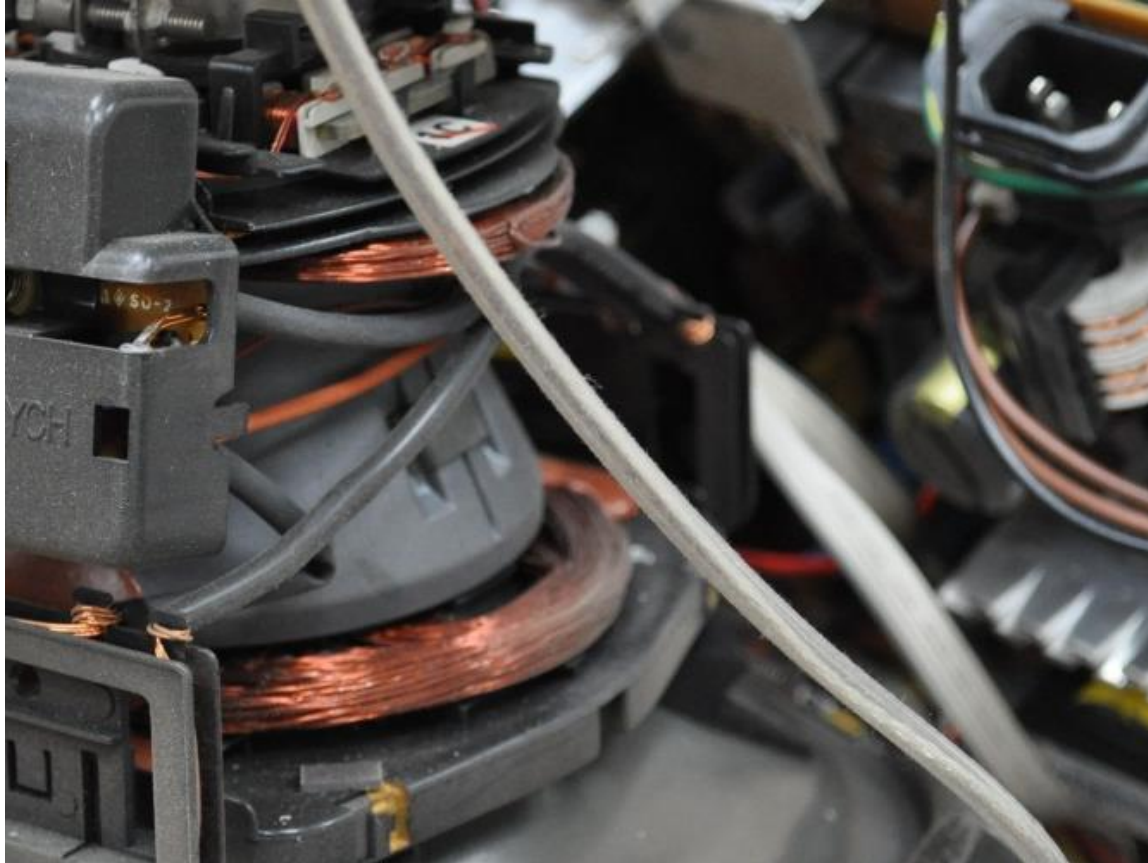




E-WASTE CONTAINS...

Hazardous and toxic material.





ALSO CONTAINS...

Valuable material.





DEVELOPING COUNTRIES...

Lack reliable waste management infrastructure.



WHO WE ARE



Close the Gap: Bridging the Digital Divide

- Founded in 2003 as a social enterprise
- Serving African, Latin American, Asian regions
- 280,000 computers collected
- 80,000 computers deployed in developing countries
- 1,500,000 unique IT users reached weekly

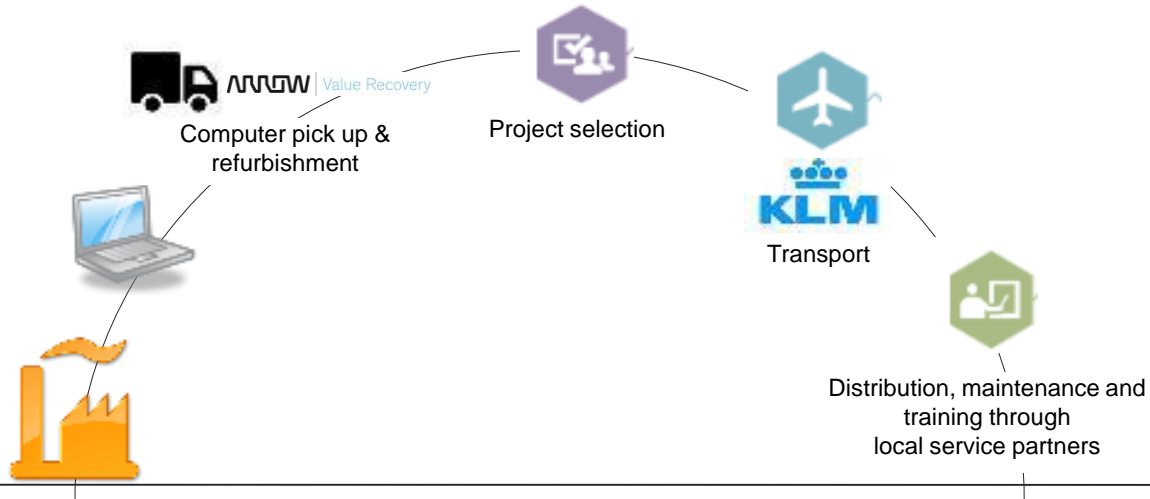
WorldLoop: Changing the E-waste Cycle

- Founded in 2009 by Close the Gap
- Serving Sub-Saharan Africa, Latin America
- Operational in 7 countries across 2 continents
- 900+ tons of e-waste collected and processed
- 70+ tons of hazardous waste spared from landfills



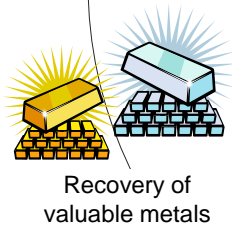
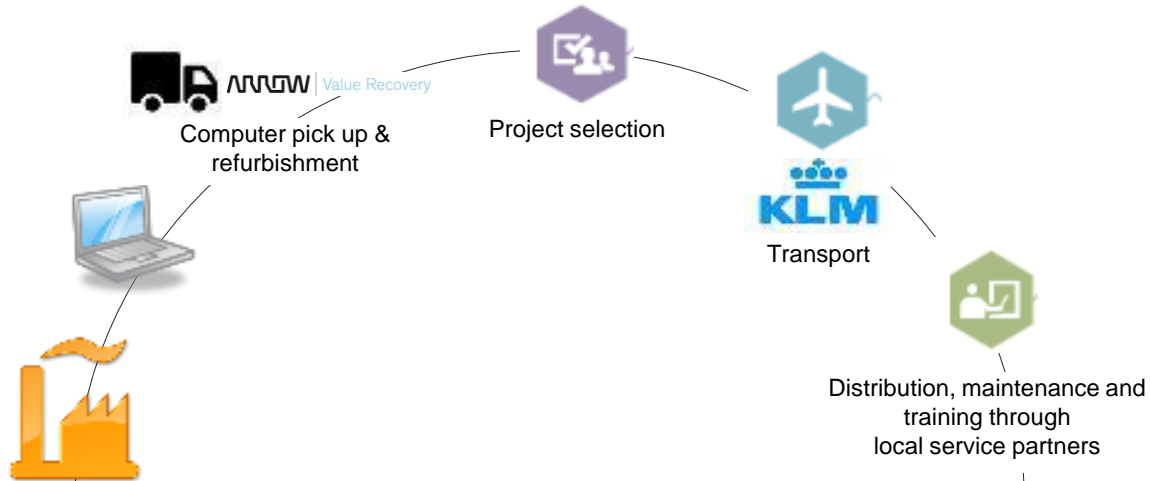
WHAT WE DO

**CLOSE
THE
GAP**
BRIDGING
THE DIGITAL
DIVIDE
10 YEARS



WHAT WE DO

**CLOSE
THE
GAP**
BRIDGING
THE DIGITAL
DIVIDE
10 YEARS



Coolrec umicore
materials for a better life

Best available tech. processing



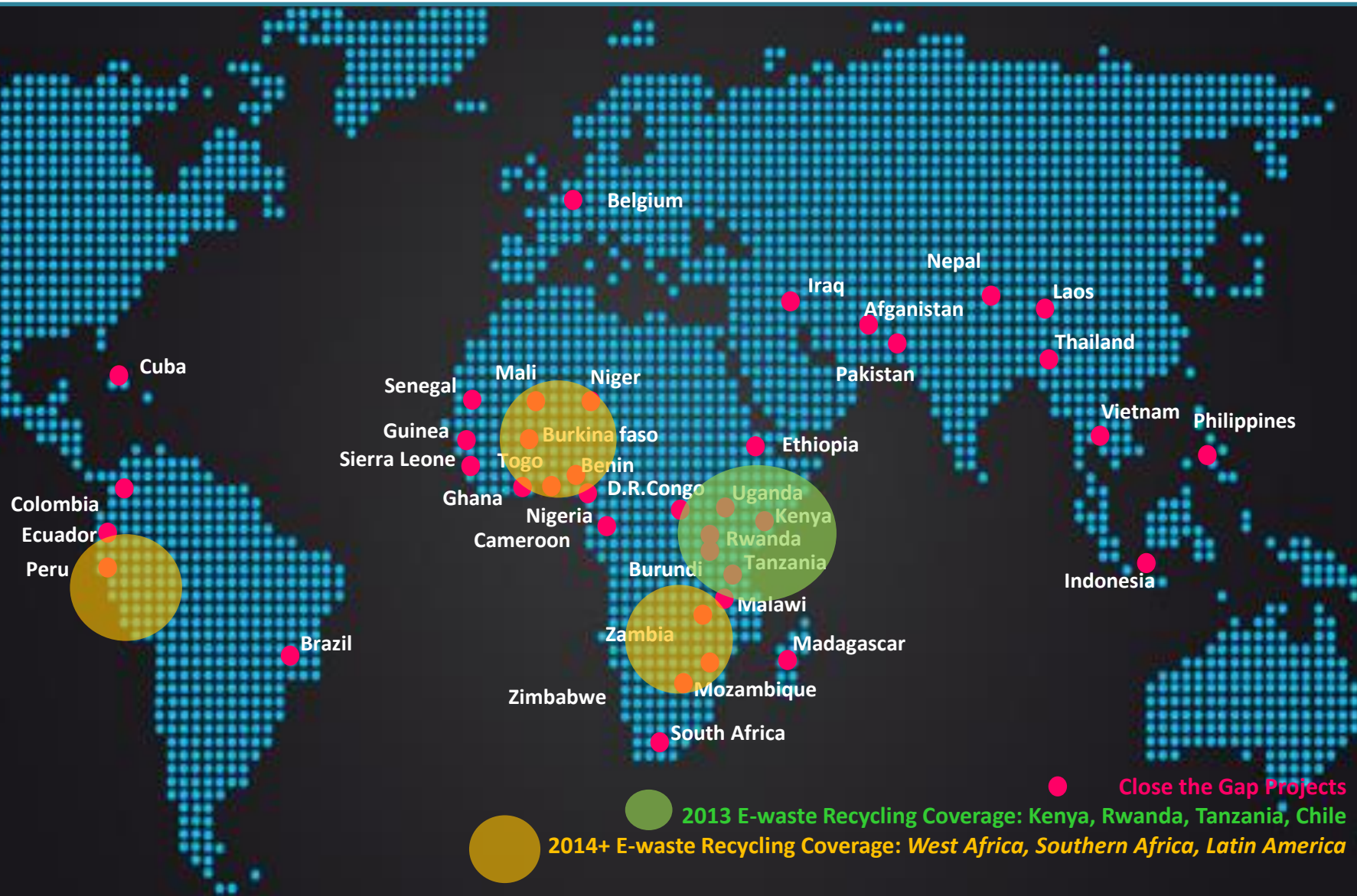
Local Resource
Recovery



Local dismantling



INTERNATIONAL REACH





CONTINUOUS EVOLUTION

Sustainable business models ≠ charity
Leveraging the strengths of stakeholders
Strengthening partnerships



COMMUNITY OF SUPPORT



DONATING COMPANIES 2013

180 | ABN AMRO | Acerta | Adecco | ADMB (Kamodata) | Aegon | Ahold | Air France | Amnesty International | AXA | AZC Utrecht/COA | BECI | BeTV | Belden | Belga | bioMérieux | BNP Paribas Fortis | Bokiau | Cargill | Case Logic | CCA International | Cegeka | Ceran | Clear2Pay | Coca-Cola Enterprises | Coca-Cola Company | Cofely | Cofinimmo | Conseil de l'Union Européenne | DAF | Deloitte | Disney | Ebay | Edelman | Enexis | Emakina | Essent | Erasmus Hogeschool | Ernst & Young | European Schoolnet | Exact | Fabricom | Fokker Services BV | Gate Gourmet | Heerlen | GS1 | GSK Biologicals | Heineken France | Holland Venture (Voyage et Culture) | Honda | Immobel | ING | Interwaas | ISB | ISZF | Jumbo | Karel de Grote Hogeschool | KBC | King Baudouin Foundation | KLM | Kluwer | Le 10 Sport | Linea Raffaelli | Liberty Global | Manroland | Médecins Sans Frontières | Mobistar | Nederlandse Spoorwegen | NS Hispeed | NXP | OCE | OCMW Gent | OCMW Leuven | ONAFTS – RKW | ONVA – RJV | ONVZ | Pietercil | Real Dolmen | Politie Leuven | PostNL | ProRail | Provincie Vlaams-Brabant | Provincie West-Vlaanderen | Rabobank | Robert Half International | Rode Kruis | SAS | Schneider | SD Worx | SiNSYS | Starwood Hotel & Resorts | St. Joseph Krankenhaus | Stork | Synergics | Telenet | Terumo | Thomson Reuters | Toyota | Transvorm | Triodos | TUC RAIL | UCB | Uconnect | UGent | Umicore | Unive – VGZ | UPC | UZ Antwerpen | UZ Leuven | Vlaamse Gemeenschapscommissie | VUB | VWR | VTech | Wabco | De Watergroep | Water-Link | Weekbladpers |

