

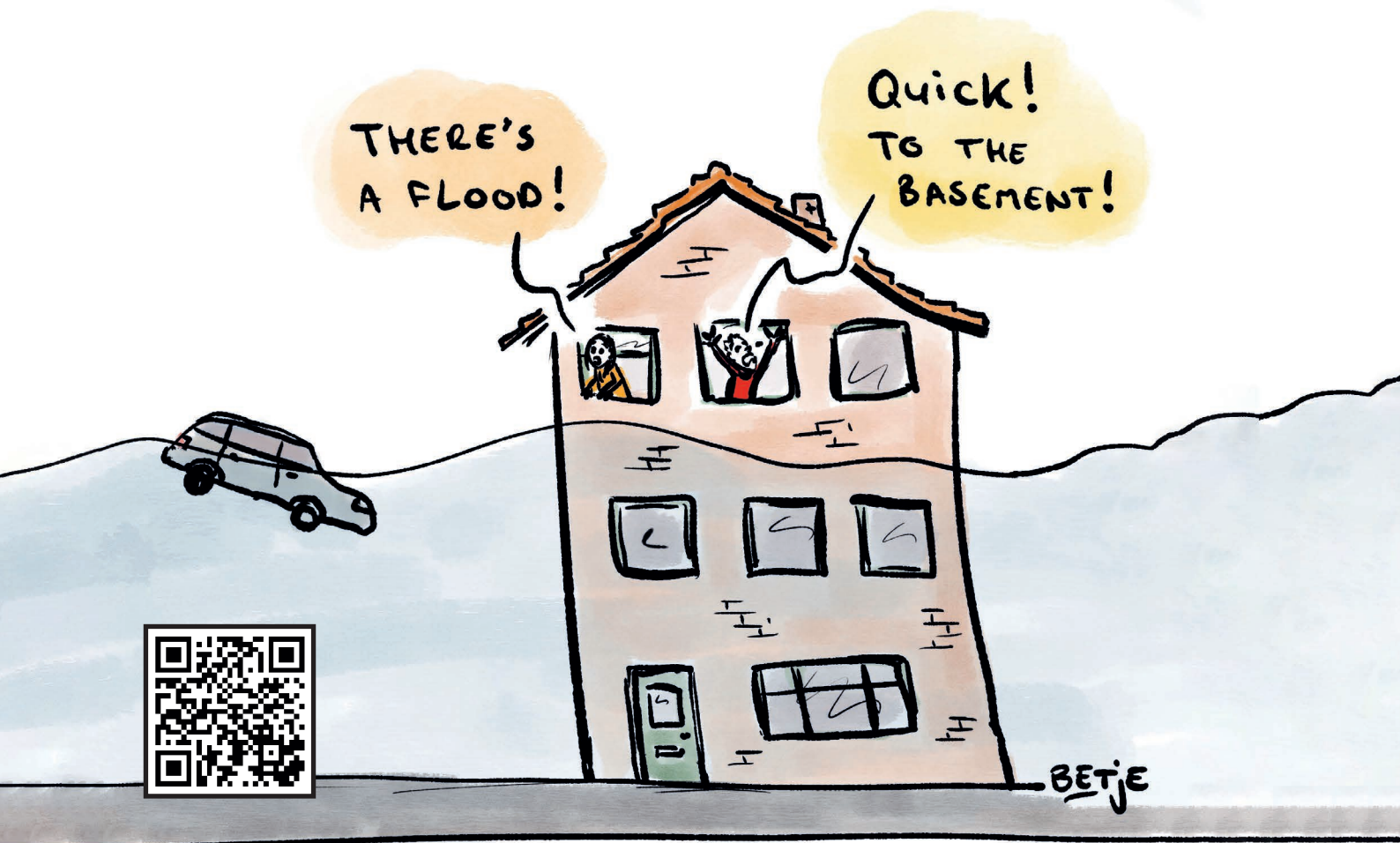
# KNOW YOUR HAZARD 2

THE SECOND CONFERENCE

## ON COMMUNITY DISASTER PREPAREDNESS

26 OCTOBER 2023

EIB Headquarters, Luxembourg



In collaboration with:





# TABLE OF CONTENTS

<b>4</b>	<b>ABOUT THE CONFERENCE</b>
<b>5</b>	<b>AGENDA</b>
<b>6</b>	<b>MODERATOR</b>
<b>6</b>	<b>INSTITUTIONAL WELCOME</b>
<b>7</b>	<b>OUR BODY IN THE FLOOD</b>
<b>7</b>	<b>FUNCTION OF SELF, TRAUMA PREVENTION, AND SOCIETAL HEALTH</b>
<b>8</b>	<b>THE HUMAN PSYCHE IN THE FACE OF DISASTER</b>
<b>10</b>	<b>INSURANCE</b>
<b>12</b>	<b>OUR HOMES IN NATURAL HAZARDS: DISASTER-RESILIENT ARCHITECTURE</b>
<b>14</b>	<b>THE STRENGTH OF COMMUNITY, OR HOW A BANK CAN CONTRIBUTE TO COMMUNITY RESILIENCE</b>
<b>14</b>	<b>LET'S PLAY</b>
<b>15</b>	<b>CARTOONISTS</b>
<b>16</b>	<b>EMOTION/MOTION</b>



The European Investment Bank (EIB or EU Bank) is the financing institution of the European Union. Created by the Treaty of Rome, its shareholders are the Member States of the European Union, and its Board of Governors is composed of the Finance Ministers of these States. The EIB enjoys its own legal personality and financial autonomy within the Community system.

The mission of the EIB is to contribute, by financing sound investment, to the policy objectives of the European Union, as laid down in its statutes and in decisions of the European Council. The EIB contributes towards the integration, balanced development and economic and social cohesion of the Members of the European Union. Outside the Union, the EIB implements the financial components of agreements concluded under European development aid and cooperation policies.



The EIB Institute was set up within the EIB Group (European Investment Bank and European Investment Fund) to promote and support social, cultural and academic initiatives with European stakeholders and the public at large. It is a key pillar of the EIB Group's community and citizenship engagement.

The EIB Institute supports social innovation and entrepreneurs who target social, ethical or environmental goals or seek to create and sustain social value. This is typically related to unemployment, equal opportunities, the marginalisation of disadvantaged groups and access to education and other basic social services.

A flagship initiative, the Social Innovation Tournament, seeks to promote innovative ideas as well as to identify and reward opportunities promising substantial societal benefits or demonstrating best practices with tangible, scalable outcomes.

In the area of microfinance and alternative finance (including impact finance, social and solidarity finance, financial innovation, etc.), the Institute complements the actions of the EIB Group mainly through grants and sponsorships, and by organising conferences and other initiatives including capacity building, and supporting higher education and research enabling the development of microfinance and alternative finance in Europe and beyond.

The Life Skills initiative is another area of intervention of the Social activities of the Institute aiming at promoting certain "life skills" within the EU, including financial and environmental education of youth, community disaster preparedness and, possibly, some other areas such as the reconnection of humans with nature. In the field of financial education, expansion to additional target countries is sought, since it is one of the cornerstones of the EIBI's strategy for reducing inequalities.

The philanthropic activities embedded in the Social activities of the Institute, include the donation of decommissioned IT equipment of the EIB and the attribution of grants in the wake of humanitarian catastrophes.



The Climate Centre's mission is to help the Red Cross and Red Crescent Movement and its partners reduce the impacts of climate change and extreme-weather events on vulnerable people.

In recent decades, there has been a sharp increase in weather-related disasters with climate change and there is an urgent need to manage the rising risk of extreme-weather events through better early-warning, disaster relief and risk reduction, and with climate-smart programmes for health and care, water and sanitation, and food security.

The Climate Centre focuses primarily on providing guidance and tools to National Societies and their partners, and fostering the exchange of experience, training and technical back-up for Red Cross Red Crescent volunteers, delegates and managers specialising in disaster risk management and health.



The mission of the Luxembourg Red Cross is to "improve the living conditions of the most vulnerable elements in society." Thousands of volunteers and over 3 000 professionals make it a major player in the areas of health, youth, social work and humanitarian action.

The Luxembourg Red Cross is involved in a variety of activities, such as emergency international humanitarian help, home care, blood donation, convalescence, welcoming of elderly or dependent people to day care homes, social assistance, welcoming of migrants and refugees, individual help for people in difficulties, transition homes and youth homes, and socio-family therapy services.

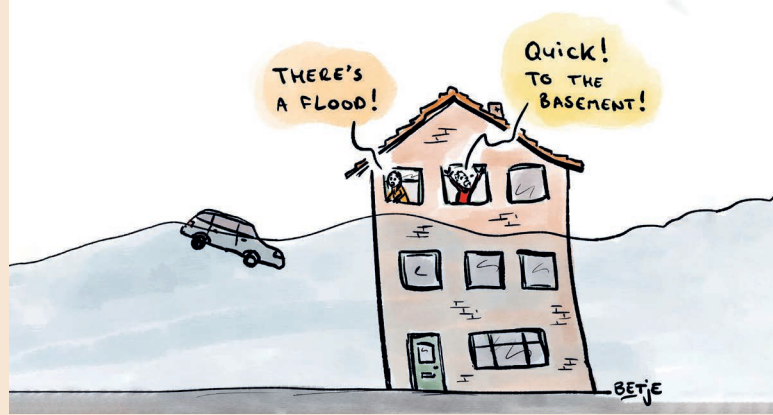
# AGENDA

Thursday, 26 October 2023

EIB Headquarters-Luxembourg and online

**Moderator: Tanya Beckett**, Broadcaster, BBC

08:30-09:00	<b>Registration and welcome coffee</b>
09:00-10:00	<b>Emotions:</b> movie by <b>Frédéric Lilién</b> , music by <b>Grégoire Baumberger</b> <b>Welcoming remarks</b> <b>Shiva Dustdar</b> , Director, Head of the EIB Institute <b>Opening address</b> <b>Ricardo Mourinho Félix</b> , Vice President, European Investment Bank <b>Our body in the flood</b> <b>Christian Clot</b> , Founder and CEO, Human Adaptation Institute
10:00-10:50	<b>Function of self, trauma prevention, and societal health</b> <b>Paul Conti</b> , Psychiatrist, Author, Consultant, Founder of Pacific Premier Group
10:50-11:10	<b>Coffee break</b>
11:10-12:50	<b>The human psyche in the face of disaster</b> <b>Let's play:</b> <b>Bettina Koelle</b> , Associate Director (ad interim), Red Cross and Red Crescent Climate Centre <b>My story in the flood:</b> <b>Boštjan Gorenšek</b> <b>Panel:</b> – <b>Ajay Khandelwal</b> , Psychoanalytic Psychotherapist, The Mind Field – <b>Shona Whitton</b> , Technical Advisor, MHPSS, IFRC Psychosocial Centre – <b>Aisling O'Connor</b> , Psychotherapist, My Mind – <b>Mustafa Othman</b> , Programme Coordinator Syria, Dünya Doktorları Derneği
12:50-13:00	<b>Motion:</b> movie by <b>Frédéric Lilién</b> , music by <b>Grégoire Baumberger</b>
13:00-14:00	<b>Networking lunch</b>
14:00-15:30	<b>Insurance</b> <b>Let's play:</b> <b>Bettina Koelle</b> , Associate Director (ad interim), Red Cross and Red Crescent Climate Centre <b>The psychology of insurance:</b> <b>Orit Tykocinski</b> , Professor, Reichman University <b>Panel:</b> – <b>Saoirse Jones</b> , Head of Insurance Development Forum Engagement, Zurich Insurance Group, Insurance Development Forum – <b>Nicholas Barr</b> , Professor, London School of Economics and Political Science – <b>Marc Lauer</b> , CEO, Foyer Luxembourg
15:30-15:50	<b>Coffee break</b>
15:50-16:50	<b>Our homes in natural hazards: Disaster-resilient architecture</b> <b>Panel:</b> – <b>Myriam Jacoby</b> , Programme Manager, Luxembourg Red Cross – <b>Oliver Page</b> , Managing Director, Snøhetta Studio Paris – <b>Alexander Forsch</b> , Senior Environmental Designer, MVRDV – <b>Fabrizio Seminara</b> , Senior Urban Specialist, European Investment Bank
16:50-17:10	<b>The strength of community, or how a bank can contribute to community resilience</b> <b>Lucie Ozanne</b> , Associate Professor, University of Canterbury
17:10-17:40	<b>Wrap-up</b> <b>Closing remarks:</b> <b>Edina Csanyi</b> , EIB Institute <b>Cartoons of the day</b>
17:40-18:30	<b>Networking cocktail</b>



## ABOUT THE CONFERENCE

Climate change is causing an increase in extreme weather events, including floods, wildfires and other disasters. Being prepared for these events can save lives — and it can also save other precious things like the natural environment, animals and even property. What's more, knowing how to respond and help others when disaster strikes will boost morale in difficult times, both during an event and in its aftermath.

This disaster preparedness conference (now being held for the second time) will teach participants using the scenario of a flood and the story of a fictional character, Nino, who must somehow get through it.

It is winter, and Nino's house has been flooded — help is late in coming, and Nino has to swim to survive! But even after making it through, Nino must arrange for restorations to make their house liveable again.

What physical effects does Nino's escape have on their **body**? Could Nino freeze to death in the water? How much can humans endure in such a situation, and what can increase our chances of survival?

What goes on in Nino's **mind**? How are they impacted mentally as a disaster victim? And what measures can make people and communities more psychologically resilient?

What happens to Nino's **flooded house**? Could they have done anything to make it more flood-resistant?

Did Nino and their family have **insurance**? (And if so, would they have felt safer?) Who will pay to repair the damage? Can the insurance be relied on?

And finally: How can a **bank help** communities rebuild and become better prepared for natural disasters?

## MODERATOR



**Tanya Beckett**  
Broadcaster, BBC

Tanya has worked in broadcasting and the media for over 20 years. She started out at the FT, then went to work for CNBC, Sky News, CNN and since 1998, the BBC. She has worked on a variety of programmes on BBC World News, the BBC News Channel, BBC Radio 4 and BBC One and Two, including The Inquiry, Our World, Working Lunch, Today, World Business Report and Newsnight. She also spent three years living in and reporting from New York for the BBC.

Tanya also works with the World Bank, the EBRD, the EIB, the ADB, Chatham House, the Somali government and the British Foreign Office in matters relating to trade and communication. She currently writes and presents the weekly BBC current affairs radio documentary The Inquiry and presents news programmes for BBC news.

Tanya has a degree in metallurgy and materials science from Oxford University and spent five years as an investment banker in Frankfurt and London. She speaks fluent German, good French and some Spanish.

# WELCOMING REMARKS



**Shiva Dustdar**  
**Director, Head of the EIB Institute**

Shiva Dustdar currently serves as the Head and Director of the EIB Institute, which brings the values and mission of the EIB Group close to society through non-commercial activities supporting its climate, innovation and development priorities. Shiva has 30 years of experience in the financial industry working for large private and public institutions in New York, London and Luxembourg. Since joining EIB in 2003, she has worked in risk management, lending, investing and advising in innovative companies. Until June 2022, Shiva headed the Innovation Finance Advisory (IFA) Division in the EIB, which she built and scaled up into a successful innovation financing advisory programme covering green, digital, gender-smart and health-related sectors. (<https://www.eib.org/en/products/advising/innovfin-advisory>).

Shiva started her career in 1993 at J.P. Morgan in Investment Banking in New York working in M&A, Project Finance and Emerging Markets before joining Fitch Rating Agency in 1999 to set up its European High Yield rating business. She holds a BA (Magna cum Laude) in Economics from Columbia University in New York and an Executive MBA from London Business School (LBS). Shiva is an innovation finance expert and regular speaker on innovation and impact financing, gender smart investing, digital and green financing and actively engaged in networks that promote sustainable and mission-oriented financing.

# OPENING ADDRESS



**Ricardo Mourinho Félix**  
**Vice-President, European Investment Bank**

Ricardo Mourinho Félix is Vice President of the EIB since October 16, 2020. The Vice-Presidents, together with President Werner Hoyer, form the Management Committee that runs the bank on a day-to-day basis. Vice-President Mourinho Félix has oversight of the Bank's funding and treasury, economic analysis and research activities as well as of lending operations supporting the Blue Economy, EIB's migration response, as well as those in support of the EU programs as RRF, Invest EU and Just Transition Mechanism in the context of the European Green Deal. He also oversees the relations with rating agencies, national promotional institutions, OECD and think tanks.

VP Mourinho Félix is responsible for institutional relations with Spain and Portugal, Algeria, Morocco, Tunisia and Latin-American and Caribbean States.

Before joining the EIB, Mr. Mourinho Félix was Deputy Minister and Secretary of State of Finance in Portugal for 5 years. He was nominated member of Portuguese Government after a 20 years career at Banco de Portugal where he became Head of the Portuguese Economy Division 2013. He holds a Masters in Economics at the NOVA School of Business and Economics and a degree in Economics at ISEG Lisbon School of Economics and Management.



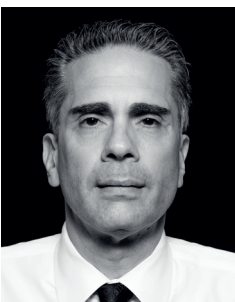
# OUR BODY IN THE FLOOD



**Christian Clot**  
**Founder and CEO, Human Adaptation Institute**

Christian Clot is a Franco-Swiss explorer-researcher who has devoted himself to exploration and scientific research for over 20 years. He has mounted and led expeditions over all types of terrestrial and marine terrain. Since 2014, he has directed the Human Adaptation Institute, which studies human cognitive and physiological adaptation capacities in real-life situations. He is the author of several books, films and vice-president of the Society of Explorers.

# FUNCTION OF SELF, TRAUMA PREVENTION, AND SOCIETAL HEALTH



**Paul Conti**  
**Psychiatrist, Author, Consultant, Founder of Pacific Premier Group**

Paul M. Conti is a graduate of Stanford University School of Medicine. He completed his training at Stanford and at Harvard, where he served as Chief Resident. He then worked in private practice while serving on the medical faculty at Harvard. He moved to Portland, Oregon in 2007 and was named one of the state's best physicians during his first full year of practice. He is a psychiatrist, consultant, and author of *Trauma: The Invisible Epidemic*, which has been translated into 18 languages. His September 2023 four-episode guest series on the Huberman Lab podcast has been accessed by over 15 million people. He is the Founder and President of Pacific Premier Group, PC, a team of highly skilled professionals who provide brain-based consulting and clinical mental healthcare.

# THE HUMAN PSYCHE IN THE FACE OF DISASTER

## MY STORY IN THE FLOOD



### **Boštjan Gorenšek**

Originally from Leše, Boštjan Gorenšek has been based in Prevalje for the last five years. He is married to Alenka Miler Gorenšek, and they are the proud parents of a son, Kajetan. Two years after graduating from high school, Boštjan pursued his dream of owning a business and co-founded Si-TEAM Creations, where he still works today.

He holds a degree in marketing, and formerly served as the Deputy Mayor of Prevalje Municipality for social activities and the economy.

Boštjan is an entrepreneurial mentor, volunteer, Rotarian, collector of old Prevalje postcards, piano accordion player, competitive singer, dreamer and hard worker. He is also the author of fairy tales about the beloved character Vilin Tjan, and every December more than 20 000 copies of his books are donated to children in Slovenia. For five years, he served as President of the Mohorjan Cultural Association and the Association of Young Entrepreneurs of Koroška, and has served on committees of various associations in Prevalje Municipality and beyond.

Currently, Boštjan is President of the Rotary Club Slovenj Gradec, a member of the programme committee for the Slovenian Reading Badge, and the creative leader of the largest family festival in Koroška, alongside other roles.

Since 4 August of this year, he has spent most of his time helping people affected by floods, ranging from physical assistance to coordination and financial aid.

## PANEL



### **Ajay Khandelwal**

#### **Psychoanalytic Psychotherapist, The Mind Field**

Ajay Khandelwal is a psychotherapist who has worked in the helping professions for over 20 years. He has run drug and alcohol services for people experiencing addictions and worked in therapeutic communities for adults experiencing psychosis. He carried out his PhD research in north India, exploring intergenerational influences in 20 families. He regularly works with professionals from different backgrounds, delivering courses that focus on building personal resilience in the workplace, as well as resilience and self-care sessions for workplace professionals who have experienced trauma. He is based in the United Kingdom and offers therapy in English and Hindi/Urdu.

# THE HUMAN PSYCHE IN THE FACE OF DISASTER

## PANEL



### **Shona Whitton**

#### **Technical Advisor, MHPSS, IFRC Psychosocial Centre**

Shona Whitton is a Technical Advisor in Mental Health and Psychosocial Support at the IFRC Psychosocial Centre, specialising in MHPSS in emergencies, climate change and protection, gender and inclusion. She worked in emergency operations with Australian Red Cross for more than a decade, most recently as the National Lead for Recovery and Psychosocial Support. In this role she led the coordination and development of Australian Red Cross' field disaster recovery operations and emergency MHPSS programmes. Shona is a Churchill Fellow and holds a Bachelor of Social Science (Psychology) (Honours), a Masters in Community Development (Emergency Management), a Graduate Diploma of Psychology, a Graduate Certificate in Gender Mainstreaming Policy & Analysis, and an International Diploma in Humanitarian Assistance.



### **Aisling O'Connor**

#### **Psychotherapist, My Mind**

Aisling O'Connor is a counsellor and psychotherapist based in Ireland. She completed her BSc in Counselling and Psychotherapy with Middlesex University and is a member of the Irish Association for Counselling and Psychotherapy (IACP). She has a particular interest in counselling and psychotherapy research, bridging the gap between research and clinical practice and the interaction of counselling and social change. Aisling is a member of the Society for Psychotherapy Research, the Research Committee of the IACP and Psychological Counsellors in Higher Education Ireland. Prior to working as a counsellor and psychotherapist, she combined a career in event management with volunteer roles including social change advocacy, literacy programmes and developing training programmes for youth leaders in community organisations.



### **Mustafa Othman**

#### **Programme Coordinator Syria, Dünya Doktorları Derneği**

As a professional medical doctor, Mustafa Othman has over ten years of experience in medicine and medical management and in the field of NGOs in Syria and Türkiye. He is a valuable member of staff of Médecins du Monde Türkiye, working for an emergency response programme in Hatay Province. He volunteered as a capacity building trainer for Ambulances Without Borders, and worked with many NGOs in Syria before having to leave the country for Türkiye after ISIS took control. Unfortunately, he and his family were among the earthquake victims. A Syrian national, he had to leave Aleppo where he was studying for his hometown when the revolution started to help in the field hospital. He then joined Mercy Corps. He now lives and works in Antakya in Hatay Province, Türkiye.

# INSURANCE

## THE PSYCHOLOGY OF INSURANCE



**Orit Tykocinski**  
**Professor, Reichman University**

Orit E. Tykocinski is a professor of Psychology at Reichman University in Israel. In her research she explores the role of regret in intuitive judgments; the phenomenon of inaction inertia in consumer behaviour and political negotiations; emotion-based financial choices; and the effects of magical thinking on subjective risk assessments. Her research has been published in top academic journals and her TED talk on the counterintuitive psychology of insurance has received more than a million views.

## PANEL



**Saoirse Jones**  
**Head of Insurance Development Forum Engagement, Zurich Insurance Group, Insurance Development Forum**

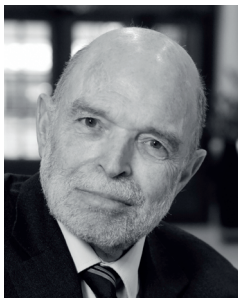
Saoirse Jones is Head of Insurance Development Forum Engagement at Zurich Insurance Company Ltd, leading their engagement with the Insurance Development Forum, an industry-led public-private partnership focused on extending the use of insurance and risk management capabilities to build greater resilience and protection of vulnerable people, communities and businesses.

Saoirse brings with her over 20 years of experience in business, with a deep and broad knowledge of investment management complemented by organisational change management know-how. Prior to her current role, Saoirse was Transformation Manager, leading strategic change management initiatives, developing and implementing creative, innovative solutions through facilitation, consultation, and collaboration. Saoirse was also Regional Chief Investment Officer where she developed, implemented and managed investment strategies of multiple countries. This included designing holistic investment strategy and governance processes for newly established businesses.

Saoirse holds a master's degree in Economics from the University of Basel, Switzerland, and is also a CFA Charterholder.

# INSURANCE

## PANEL



### **Nicholas Barr**

#### **Professor, London School of Economics and Political Science**

Nicholas Barr is Professor of Public Economics at the London School of Economics, the author of numerous articles, and author or editor of over 20 books, including *The Economics of the Welfare State* (sixth edition, 2020), *Financing Higher Education: Answers from the UK* (with Iain Crawford, 2005) and *Pension Reform: A Short Guide* (with Peter Diamond, 2010, also in Spanish). The core of his work is an exploration of how market failures both explain and justify the existence of welfare states. He is a member of the Editorial Board of the *International Social Security Review* and Associate Editor of *CESifo Economic Studies*, the *Australian Economic Review* and the *Journal of the Economics of Ageing*. Nicholas' academic writing is enriched by his wide-ranging policy work, including spells at the World Bank and International Monetary Fund, and as a member of the World Economic Forum's Global Agenda Councils on Demographic Shifts and on Ageing Society. He has advised governments in the post-communist countries, and in the UK, Australia, Chile, China, Hungary, New Zealand and South Africa. He was a member of a small group invited to advise the government of China, presenting their findings to the premier in 2004. His more recent activities include membership of the Chile Bravo Commission.



### **Marc Lauer**

#### **CEO, Foyer Luxembourg**

Managing Director since 15 April 2014. His mandate was renewed in 2022 for a period of three years. Born in 1965 and holding Luxembourg nationality, Marc Lauer has a degree in Actuarial Sciences and another in Economics. He began his career at the Commissariat aux Assurances in 1989 and became a member of the Management Committee in 1995. He joined the Foyer Group as Chief Operating Officer in 2004. In 2013, he became a director of Foyer S.A. and since the 2014 General Meeting has been its Chief Executive Officer. Marc is Chairman of the Board of Directors of Foyer Santé S.A. He is a director of Foyer Vie S.A., Foyer Assurances S.A., Wealins S.A. and CapitalatWork Foyer Group S.A. He is also President of Board of the Institut National pour le Développement durable et la RSE (INDR), Vice-Chairman of the Board of Directors of the Association des Compagnies d'Assurances (ACA), and Vice-Chairman of the Board of the Chambre de Commerce Luxembourg. Marc is a member of the Board of Directors of the Commissariat aux Assurances (CAA). He is also a member of the Board of Directors of the Fédération des Professionnels du Secteur Financier (PROFIL), Luxembourg For Finance (LFF) and the Luxembourg Stock Exchange (LuxSE). He is also a founding member of the Institut Luxembourgeois des Actuaire (ILAC).

# OUR HOMES IN NATURAL HAZARDS: DISASTER-RESILIENT ARCHITECTURE

## PANEL



### **Myriam Jacoby**

#### **Programme Manager, Luxembourg Red Cross**

Myriam Jacoby has worked as a project manager at the international department of the Luxembourg Red Cross (LRC) since 2011. She is specialised in humanitarian emergency response and is team leader of the emergency response team of the International Federation of Red Cross and Red Crescent Societies. She was the disaster manager of emergency projects at LRC until 2018, and has been the programme manager (desk) for Ukraine since 2012, as well as for Moldova and Nepal. She has a strong background in humanitarian emergency response and project management.



### **Oliver Page**

#### **Managing Director, Snøhetta Studio Paris**

Oliver Page is Managing Director of the interdisciplinary architecture, landscape and urban design company Snøhetta's studio in Paris.

Since 2001, he has developed his experience across the field of architecture including creating a startup for a little-known construction product to reduce the carbon footprint of large scale glazed rooves. As lead architect working for Moatti and Rivière, he delivered the head offices of famous French fashion designer Jean Paul Gaultier.

He aims to increase Snøhetta's visibility in France, Luxembourg and North Africa, building on its environmental interdisciplinary approach through constructive dialogue and design with enlightened construction clients. Current projects include the renovation of a theatre in Nanterre, the construction of the High Court for Asylum Seekers in Paris and a zero-carbon startup and educational facility in Dunkirk.

# OUR HOMES IN NATURAL HAZARDS: DISASTER-RESILIENT ARCHITECTURE

## PANEL



### **Alexander Forsch** **Senior Environmental Designer, MVRDV**

Alexander Forsch joined MVRDV in 2018 as a project-leading designer and researcher as part of the MVRDV in-house R&D Group focusing on carbon reduction and alternative ecological materials for future projects. He currently holds the position of Senior Environmental Designer. His main responsibilities include creating sustainability concepts for projects, optimising workflows, bringing carbon awareness into the design process as well as connecting suppliers and other innovative stakeholders in the construction industry with design teams. In his years at MVRDV, he has worked on projects at all scales, from designing exhibitions, architectural projects, research projects, masterplans and large-scale urban developments as well as public participation processes. He studied architecture at the KIT In Karlsruhe, Germany with distinction in sustainable construction and sustainable design at the KTH in Stockholm, as well as participating in international design workshops in the Netherlands, South Korea, and Brazil. Prior to MVRDV, he was working for the Danish architecture firm COBE. Lately, he finished his postgraduate studies at ETH in Zurich, focusing on regenerative materials, how to reduce the carbon footprint by combining high-tech with low-tech, hands on with ecological building materials. MVRDV is providing the experimental and open framework to imagine how we will live, how to design with carbon and how a city from circular materials will work. Next to the work inside the office, he is collaborating with the Spanish NGO Terrachidia to restore and rebuild parts of settlements made from earth in a remote oasis in the Moroccan Sahara together with the local community.



### **Fabrizio Seminara** **Senior Urban Specialist, European Investment Bank**

Fabrizio Seminara is a Senior Urban Development Specialist at the European Investment Bank (EIB) in Luxembourg. He holds an MBA degree from the Jack Welch College of Business at the Sacred Heart University, a Master's degree in Engineering of Building Construction and a Bachelor's degree in Architecture and Town Planning. Fabrizio started his career at the European Parliament in Strasbourg, before moving to Paris to work with AS Architecture-Studio as an architect and town planner. In 2010, he joined the EIB, where he was appointed as Head of Unit for the EIB New Building project. He is currently a specialist in the Projects Directorate, assessing urban development projects with a particular focus on Climate Action and Environmental Sustainability.

# THE STRENGTH OF COMMUNITY, OR HOW A BANK CAN CONTRIBUTE TO COMMUNITY RESILIENCE



**Lucie Ozanne**

**Associate Professor, University of Canterbury**

Lucie Ozanne is a Professor of Marketing in the Business School at the University of Canterbury, Christchurch, New Zealand. Lucie is a consumer researcher who is committed to Transformative Consumer Research (TCR). She uses rigorous, theory-based research to examine individual and group-level problems and opportunities related to consumption, with the goal of improving individual, family, community and societal well-being. Her recent research focuses on community, organisational and family resilience, sustainability, and alternative and environmentally motivated consumption behaviour. She considers the highlight of her academic career to be her research and work with the Lyttelton Timebank. Through this research, she was able to document how this community group became a hub organisation that built capacities and activated those capacities to help the community respond in the immediate aftermath of the Christchurch earthquakes and during the long road to recovery.

## CLOSING REMARKS



**Edina Csanyi**

**Social Programme Officer, European Investment Bank Institute**

Edina joined the EIB in 2009, looking for a job with purpose after working for a large law firm. As the EIB representative on a special mission to the Danube Region, she helped set up a multi-country “centre of excellence” to provide strategic and project development support to cross-border and regional projects. Later, she joined EIB Advisory Services where her small team helped engineer the European Investment Advisory Hub, a mechanism that provides expert advice to European investment projects, promoting sustainable investment.

Edina earned her juris doctor degree focusing on human rights. She regularly volunteered at and organised humanitarian relief and philanthropy projects, and was engaged in performing arts as a choreographer, dancer, or stylist.

She is a certified corporate sustainability advisor (NYU Stern) and is an avid guest lecturer at universities on the topic of sustainability, net positive and the law of unintended consequences.



## LET'S PLAY



### **Bettina Koelle**

**Associate Director (ad interim), Red Cross and Red Crescent Climate Centre**

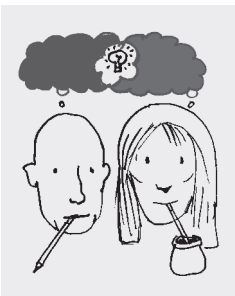
Bettina Koelle is a senior learning specialist with the Red Cross Red Crescent Climate Centre and is passionate about designing and facilitating complex dialogue using experiential innovative approaches to inspire climate action.

## CARTOONISTS



### **Betje**

Betje's work offers our humanitarian team the unique power of visual humour: her art can detect and depict the core of what is absurdly wrong about our climate problems, therefore shedding light on potential ways forward. Her "Atlas of Doom" cartoon has already inspired a generation of scientists, disaster managers, climate negotiators, and activists.



### **Ham Khan and Eugenia Rojo**

Ham Khan and Eugenia Rojo are a creative team combining cartooning, cardboard theatre, yoga, dance, busking, pavement surfing and the belief that Schrödinger was both right and wrong.

# EMOTION/MOTION



## Grégoire Baumberger

Grégoire Baumberger studied in France and Belgium. He was particularly fortunate to learn from two great masters: Jean Martin and Abdel Rahman El Bacha.

His musical career is marked by diversity. In addition to teaching at the Luxembourg City Conservatory, he gives solo recital and chamber music concerts with varied programmes — Beethoven; French music around Debussy, Ravel and Poulenc; the music of Europe between 1910 and 1920; etc. He also regularly gives concerts with commentary. Grégoire also takes part in theatrical productions (Versailles theatre, Théâtre le Ranelagh, etc.) and undertakes novel collaborative projects (Gershwin's two rhapsodies for saxophone ensemble, for example). He has worked for several years with the soprano Anne Baquet, most famously on her shows *Qui fait chanter Anne Baquet* and *Non, je ne veux pas chanter*. They took up the adventure once again at the Avignon Festival, with *Soprano en liberté* at the Théâtre du Balcon.

Having broadened his horizons to include cinema, Grégoire regularly gives cinema concerts. He has put music to films like *Berlin: Symphony of a Metropolis*, *La vocation d'André Carel* (done for the *Französische Filmtage*, a francophone film festival held in Tübingen), *Der gelbe Schein* starring Pola Negri, *Irish Destiny*, *El húsar de la muerte*, *Aelita, the Queen of Mars*, and others.

In addition, he composed and played the music for the Luxembourg Sustainability Forum held by the IMS at LuxExpo (Luxembourg) in 2022. Most recently, he composed and recorded the music for a radio piece (*Fais dodo*), which will be broadcast and available on vinyl in 2023.



## Frédéric Lilien

Frédéric Lilien left his native Belgium at the age of 23, moving to New York City to start a movie production company. His first nature film, *Pale Male*, received 15 international awards and has aired in more than 75 countries. His work has been featured in documentaries for HBO, Canal Plus, Turner Broadcasting and PBS.

Frédéric's trademark is the deeply immersive quality of his work. A pioneer in virtual reality filmmaking, he has developed unique expertise in creating 360° experiences around themes from the natural world and human cultural heritage. He has collaborated with channels like National Geographic, for which he captured never before seen images of our planet's wilderness. He has also worked with institutions to bring local heritage projects to fruition.

By capturing visuals and sound in 360° Frédéric seeks to create fully immersive experiences that evoke a sense of proximity and wonder strong enough to move his audiences to action.



# KNOW YOUR HAZARD 2

THE SECOND CONFERENCE

**ON COMMUNITY  
DISASTER PREPAREDNESS**

**26 OCTOBER 2023**  
EIB Headquarters, Luxembourg



98-100, boulevard Konrad Adenauer  
L-2950 Luxembourg  
+352 4379-75000  
[institute@eib.org](mailto:institute@eib.org)  
[institute.eib.org](https://institute.eib.org)  
[institute.eib.org/sit-alumni/](https://institute.eib.org/sit-alumni/)

